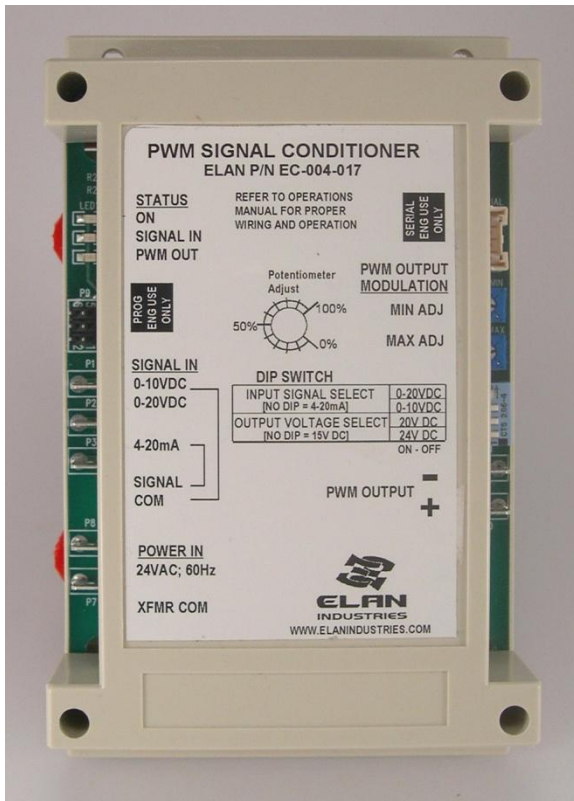


PWM SIGNAL CONDITIONER

[Modulating Valve Driver]

Converts standard temp control output to a PWM signal for direct drive of PWM Modulating Gas Valves or other devices.

PRODUCT DATA



Features

- Improved system efficiency
- PWM modulation fully adjustable for ideal modulating gas valve operation.
- Input signal selectable for 4-20mA, 0-10vdc and 0-20vdc
- PWM output power selectable to direct drive 15vdc, 20vdc or 24vdc valves
- LED status indicators verify operation
- Easily develop gas flow tables using Elan's supplied WATCH VARIABLES[®] software.
- Compact size
- Custom operation available. Contact Elan.
- Gas and blower modulation models available. Contact Elan.

Applications

- Agricultural Heating
- Furnaces; Ovens
- Make-up Air
- Infra-red
- Dehumidification
- Energy Recovery
- Industrial Space Heating

General

Modulating gas control valves offer performance and gas savings to OEM's in natural gas and LP heating systems.

For new control designs, Elan's PWM Signal Conditioner allows OEM's to use proven 'off the shelf' temp control and ignition systems and easily integrate gas modulating valves. For existing systems, OEM's can integrate gas modulating valves without extensive system re-design. Elan can also modify the software to match individual OEM requirements, for example storing multiple models on a single SKU, selectable during manufacturing. Or operation per table for Input Signal vs. % valve open.

Elan offers a variety of signal conditioners ideal for OEM's implementing gas and/or blower modulation into natural gas and LP heating systems. Contact Elan Industries at 630-679-2000 or www.elanindustries.com.

SPECIFICATIONS

Input Power

24VAC, 60Hz. From customer-supplied 24V, Class 2 transformer.

Input Signal

Selectable by DIP switch for [0-10VDC; 0-20VDC or 4-20mA].

Output Signal

PWM signal can be supplied 'generic' with MIN/MAX adjustment and linear operation. Or fully modified to match OEM's desired values for control output and % valve opening.

Output Power to Valve

Selectable DIP switch. [15VDC; 20VDC; or 24VDC].

Connections

1/4" Fast-on spade terminals, see photo.

Ambient Temperature

OPERATING AMBIENT: 32°F to 150°F (0° to 65°C)
SHIPPING/STORAGE: -40°F to 150°F (-40° to 65°C)

Atmosphere

Non-condensing, non-corrosive, non-explosive. Bare PCB, not conformal-coated.

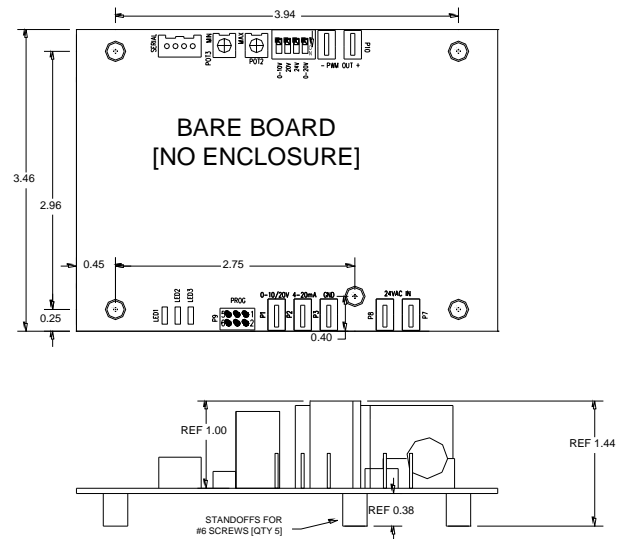
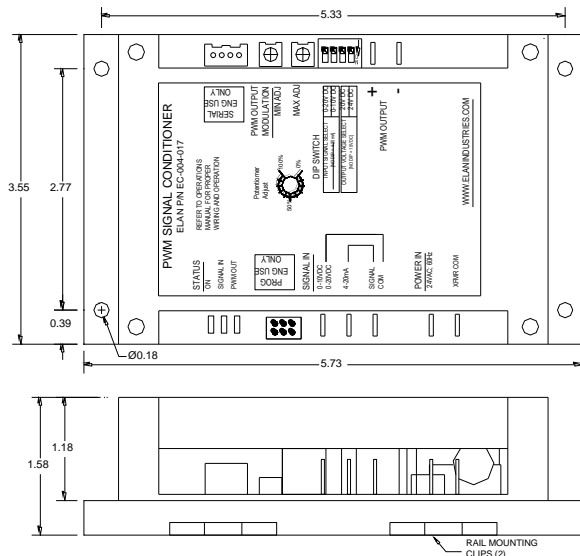
Enclosure

ABS. Wall mount or mount to std 35mm DIN-rail.

Agency

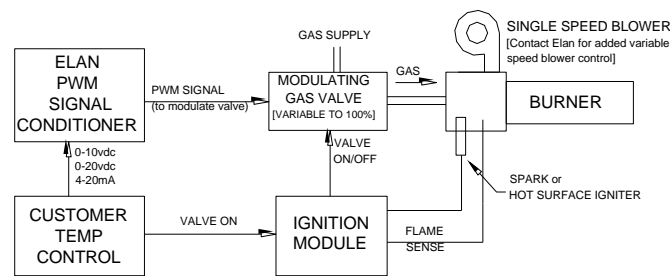
No agency rating is included. Device is low-power (24VAC) and is not a primary safety device.

DIMENSIONS



SYSTEM SCHEMATIC

PWM VALVE MODULATION



GAS AND AIR MODULATION [AVAILABLE, CONTACT ELAN]

